

CNS 计量油泵系列 / CNS Oil Metering Pump Series



PRODUCT INFORMATION/产品信息

Pump Design/产品名称: Oil Pump/油泵
 Insulation/绝缘等级: Class H
 Net Weight/产品净重: 0.220Kg
 Outlet Connector/出水接口: Barb port/倒扣

LABORATORY TEST CONDITION/工作条件

- Ta within 80°C, Tf within 50°C / Ta: 80°C 以下, Tf: 50°C 以下
- ED100%: work continuously / ED100%: 持续工作
- Ta: Ambient temperature / Ta: 环境温度
- Tf: Temperature of fluid water / Tf: 流体温度

APPLICATIONS/应用领域

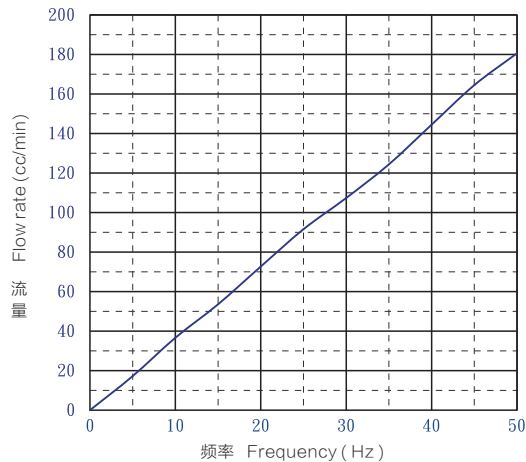
After-treatment of Diesel Engine (DPF, SCR)
 柴油机后排放处理 (DPF, SCR)

Self-priming at 0 BAR (PSI), except SV type Suitable to dry-use only during priming
 仅无背压下自吸, SV系列除外, 仅允许在上水启动时短时干抽

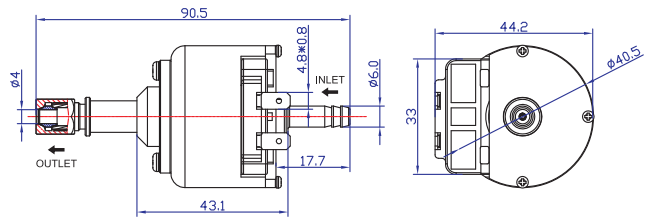
型号/Model	CNS 计量油泵系列/CNS Oil Metering Pump Series
流量/Flowrate(cc/min)	45
最大压力/Max Pressure(bar)	≥2.2
电流/Current(A)	≤0.3
噪音/Noise(dB)	<50
工作方式/Duty Cycle	Continuously/持续工作
电压规格/Voltage	24V/12Hz/8ms ON
产品认证/Product Certificate	SGS

Performance Curve/性能曲线

Note: - All the performance are intended with a Tolerance ± 15%, only for reference / 注意: - 所有参数公差为 ± 15%, 仅供参考

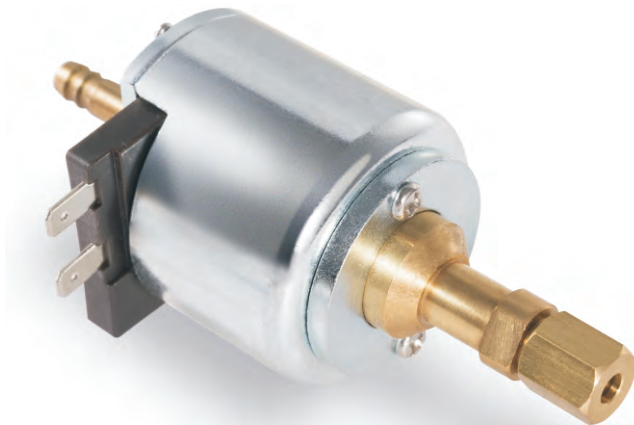


Mechanical Drawing & Dimension/外型尺寸



Dimensions/单位: millimeters/毫米

CNM 计量油泵系列 / CNM Oil Metering Pump Series



PRODUCT INFORMATION/产品信息

Pump Design/产品名称: Oil Pump/油泵
 Insulation/绝缘等级: Class H
 Net Weight/产品净重: 0.272Kg
 Outlet Connector/出水接口: Barb port/倒扣

LABORATORY TEST CONDITION/工作条件

- Ta within 80°C, Tf within 50°C/Ta: 80°C以下, Tf: 50°C以下
- ED100%:work continuously/ED100%:持续工作
- Ta:Ambient temperature/Ta:环境温度
- Tf:Temperature of fluid water/Tf:流体温度

APPLICATIONS/应用领域

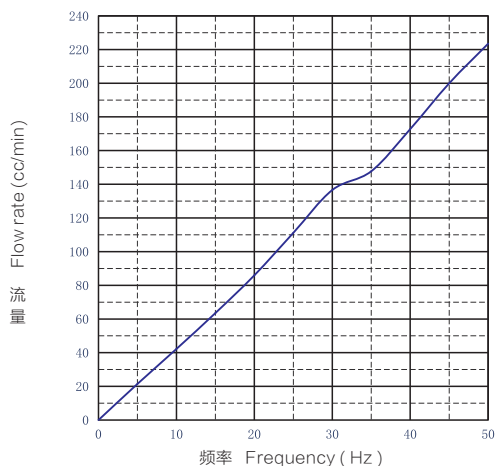
After-treatment of Diesel Engine (DPF, SCR)
 柴油机后排放处理 (DPF, SCR)

Self-priming at 0 BAR(PSI),except SV type Suitable to dry-use only during priming
 仅无背压下自吸, SV系列除外,仅允许在上水启动时短时干抽

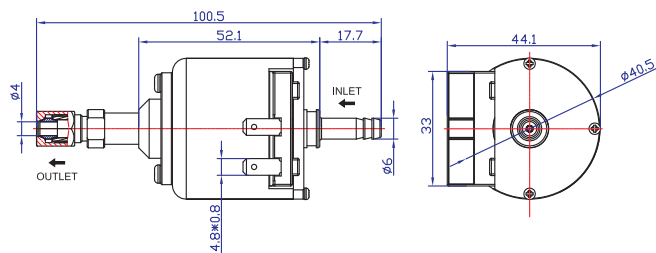
型号/Model	CNM 计量油泵系列/CNM Oil Metering Pump Series
流量/Flowrate(cc/min)	50
最大压力/Max Pressure(bar)	≥4.0
电流/Current(A)	≤0.4
噪音/Noise(dB)	<50
工作方式/Duty Cycle	Continuously/持续工作
电压规格/Voltage	24V/12Hz/8ms ON
产品认证/Product Certificate	SGS

Performance Curve/性能曲线

Note: - All the performance are intended with a Tolerance ± 15%, only for reference/注意: -所有参数公差为 ± 15%, 仅供参考



Mechanical Drawing & Dimension/外型尺寸



Dimensions/单位: millimeters/毫米